

I
U
A
V

Università Iuav di Venezia



ETRUSCAN PLACES. MEDITERRANEAN GLANCES

9th international design workshop

promoted by
Designing Heritage Tourism Landscapes international network
organized by
Sapienza Università di Roma, Università degli Studi Roma Tre
info:

5>17.9.2022
international
workshop
Castello di Santa
Severa, Roma
deadline



Ricostruzione del sistema di presidi territoriali dell'Etruria Meridionale. In primo piano la Testa di Leucotea, rinvenuta nel santuario di Pyrgi.

9th DHTL
International Workshop
Rome 2022
5-17 September 2022

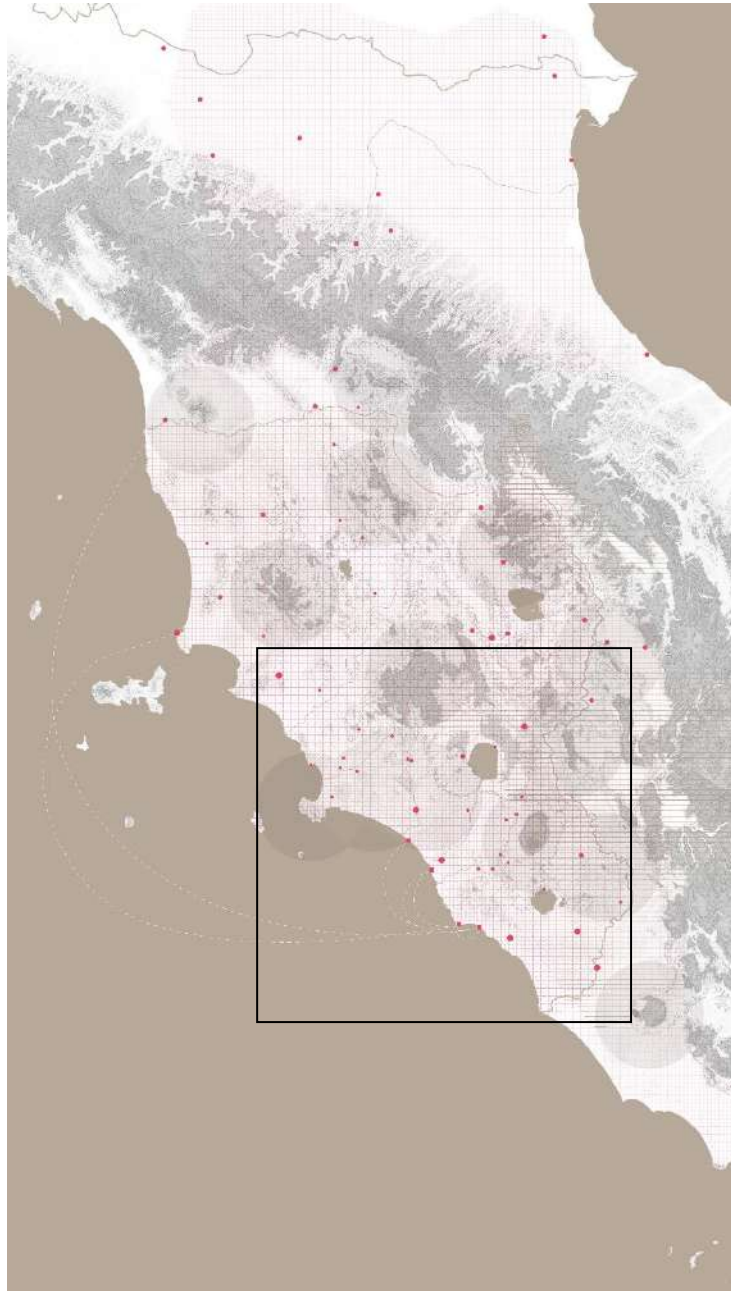
Promoted by
Designing Heritage Tourism Landscapes
International network of schools of
architecture

Organized by
Sapienza Università di Roma
Università degli Studi di Roma Tre

Etruria Meridionale

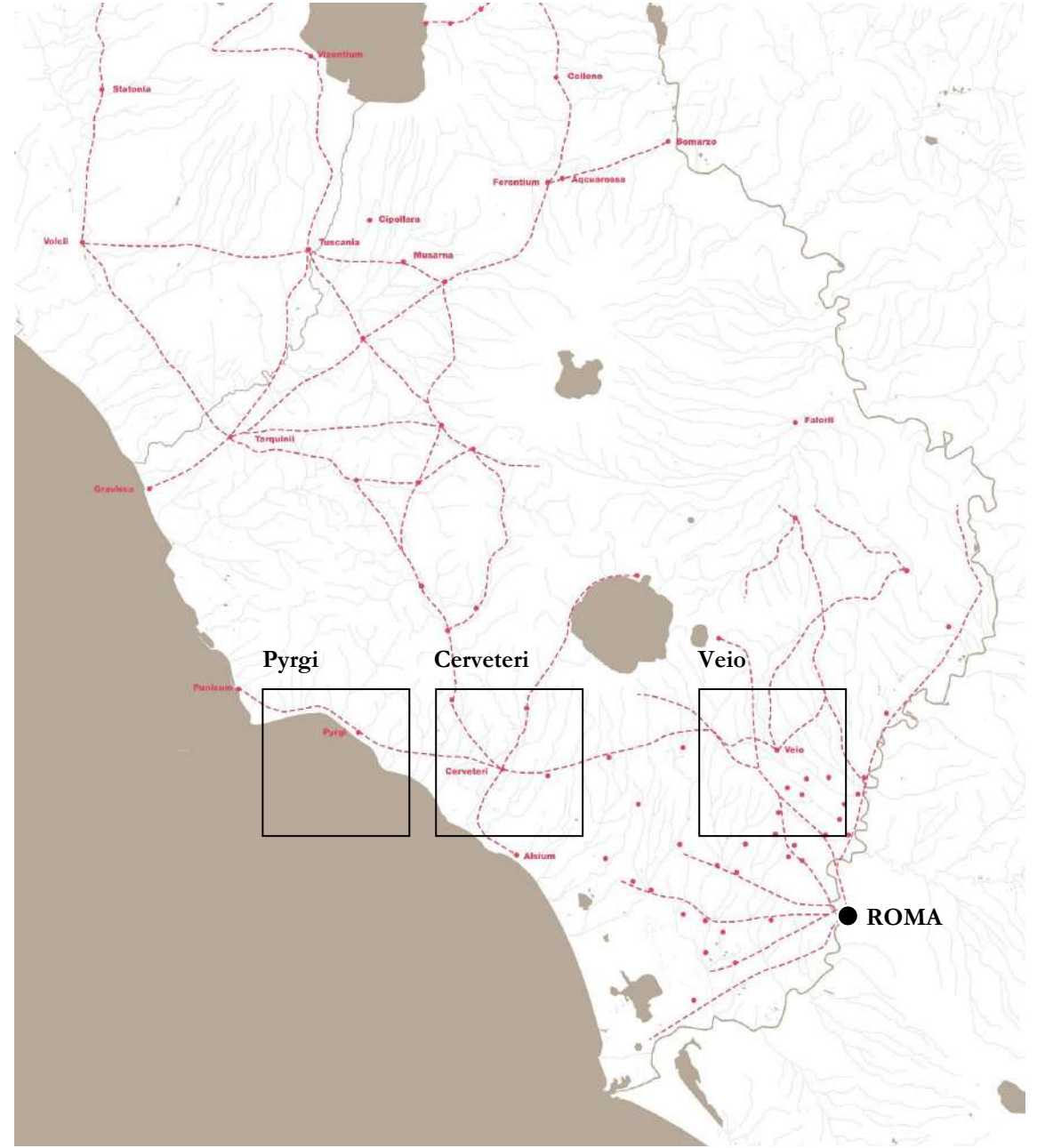
On the left:

The extent of Etruria. Marked by black rectangle the region of Southern Etruria, which lies between Tevere and Marta rivers



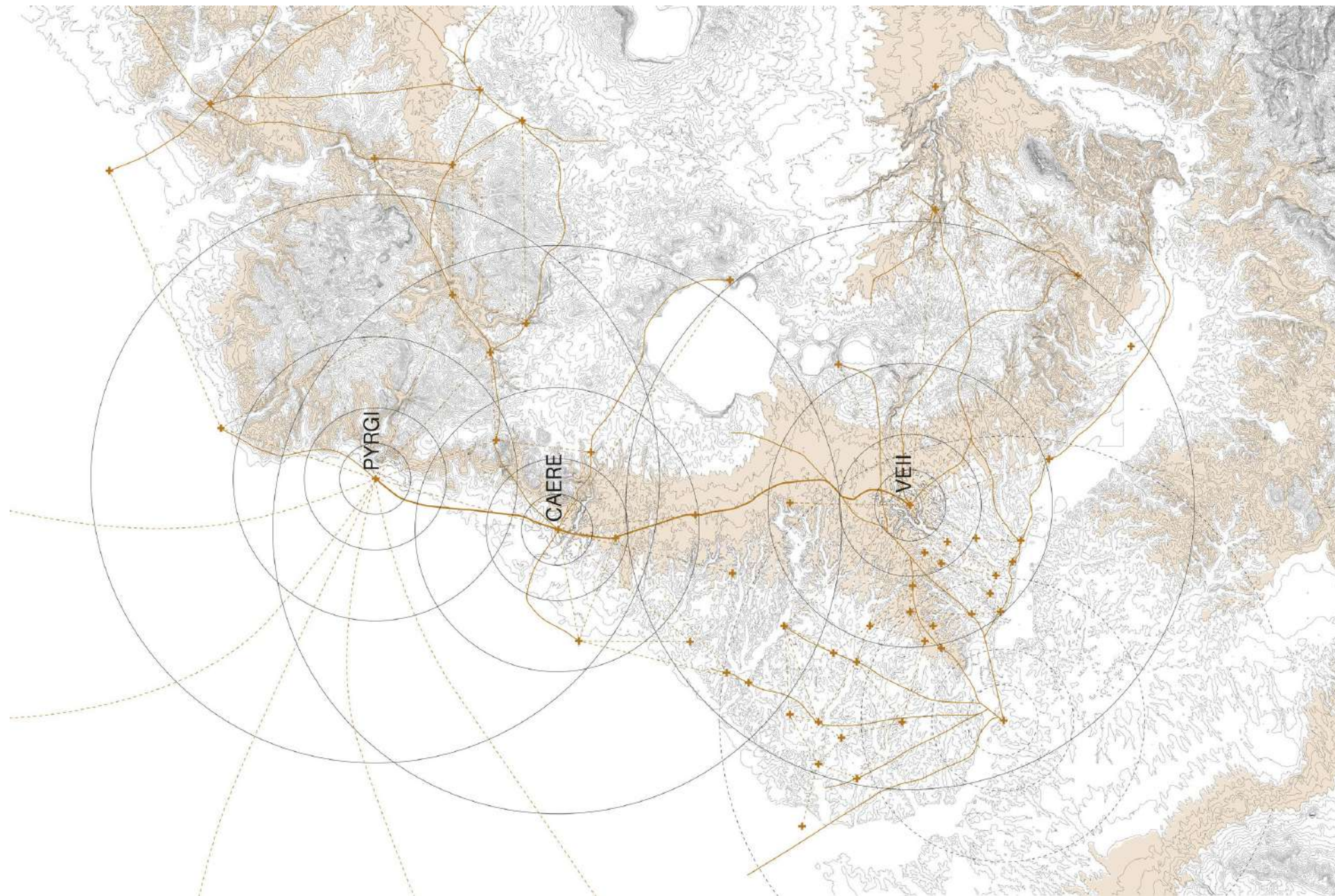
On the right:

The three workshop case studies in the region of Southern Etruria and the relation with Rome



One of the main Etruscan regional systems that connected the countryside to the coast.

The relationship among Veii, Caere and Pyrgi will represent the background of the workshop proposals.



Site 1
SANTA SEVERA
PYRGI ARCHEOLOGICAL AREA

Scale 1:5000



AERIAL VIEW OF THE
ARCHEOLOGICAL AREA

Credits:
Dipartimento di Scienze dell'Antichità
Sapienza Università di Roma



aerial view of the
Santa Severa's Castle

WORKSHOP HEADQUARTER



View from inside of the
Santa Severa's Castle

WORKSHOP HEADQUARTER



Site 2
VEIO ANCIENT CITY'S PLATEAU

Scale 1:5000



View of the Via Francigena Route
crossing the surface of plateau

THE LANDSCAPE

ph: Alessandro Lanzetta



THE HIDDEN RUINS
OF THE ETRUSCAN CITY

ph: Alessandro Lanzetta





SANTUARIO DI PORTONACCIO

HIDDEN GEMS IN THE
LANDSCAPE

ph: Alessandro Lanzetta



Site 3
CERVETERI
ARCHEOLOGICAL AREA

Scale 1:5000





THE NECROPOLIS

ETRUSCAN FINDS

